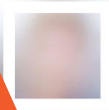


NEC



NeoFace® Facial Recognition for Public Safety

Build safer and smarter communities,
with the world's most trusted facial
recognition solution

\Orchestrating a brighter world





What is NeoFace?

NeoFace® is NEC's high performance, highly scalable Facial Recognition algorithm, providing fast and accurate results for the most demanding real-time or post-event Facial Recognition use cases.

It's designed to find a needle in a haystack, reducing a problem down to a much smaller review process. Built upon 40 years experience and world leading AI, it's highly tolerant of ageing, angles, headwear and environmental factors such as lighting.

It performs consistently regardless of age, ethnicity and gender by combining the best feature-matching and AI technologies and built-in safeguards support privacy and proportionate use, with auditing and reporting as well as automatic and manual data retention tools.

Why use NeoFace?



It's independently verified as the world's most accurate

- Our NeoFace algorithm has topped National Institute of Standards and Technology (NIST) Rankings for over 10 years in accuracy and equitability. It works effectively even in challenging conditions, e.g. poor lighting and masks. So you can be confident officers are using the best possible solution.

It was built with public trust in mind

- It's got built-in privacy features to enable you to comply with UK's laws and regulations.
- We're guided by NEC's long-established principles around biometrics and AI which encourages ethical, proportionate and targeted use.
- We have worked closely with many UK forces to advance the use of facial recognition in the UK.

It's continually updated to deliver the best possible performance

- It enjoys constant investment from NEC's global biometrics team and benefits from real-world deployment across 57 countries.
- Its deployment is guided by our policing and public safety experts who've developed and deployed a range of solutions
- Feedback from forces are incorporated into future versions of NeoFace solutions to continuously improve and expand on its capabilities.



Why use Facial Recognition?

✓ **Keep the public safe**

By locating dangerous or vulnerable people in a fraction of the time, Facial Recognition software can reduce the chance of further offences and help to keep the public safe.

✓ **Reduce the risk to officers**

Facial Recognition software can help identify known violent offenders, by matching against custody records.

✓ **Focus resources effectively**

Facial Recognition can speed up response times and cut significant amounts of manual work from investigations, which your force can reallocate to other investigations.

How can it help your operations?

✓ **It speeds up investigations by identifying people in minutes, not weeks**

It locates or identifies individuals against watchlists significantly faster than manual review; potentially saving weeks of investigation time that can be reallocated to working on other cases.

✓ **It offers a great return on investment**

Our retrospective solution helps you look for individuals who may have already been captured in custody photos, video or CCTV. This is different from our live solution, which helps to prevent harm by matching faces in real time.

It can add value in a range of areas, like identifying or locating missing people, dangerous offenders or victims, even reopening cold cases to identify unidentified individuals.

✓ **It's proven in UK policing**

It is in operational use daily with a number of UK forces, including some of the largest, to support faster investigations, safer custody processes and more.



What are the different types of facial recognition?

Retrospective Facial Recognition

Retrospective Face Recognition (RFR) is used to identify individuals post events from Images or Videos.

By submitting an image or video into the system, it is matched against all subject images in your database where a set of candidates are returned in order of highest similarity score to lowest for human adjudication.



Image



Video

Live Facial Recognition

Identify wanted or vulnerable individuals in realtime with Live Facial Recognition (LFR).

By connecting our Facial Recognition solution to a camera, you can identify vulnerable individuals as quickly as possible to give them the help they need and arrest wanted individuals before they commit further crimes.



Missing or vulnerable individuals



Border Security and Contactless travel



Wanted Individuals



Custody Suite

Operator Initiated Facial Recognition

Use our Facial Recognition solution through a mobile phone to identify individuals on the go.

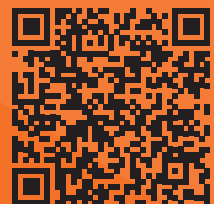
Simply use the facial recognition mobile app to take a picture of an individual to see if you can identify them.

This could be the victim of a car accident, an individual for serious or violent crimes or to check an individual has been reported missing



Mobile App

For more information on the services NEC Software Solutions offers visit our website necsws.com or get in contact with us at hello@necsws.com



necsws.com