



NEC

Professional Services

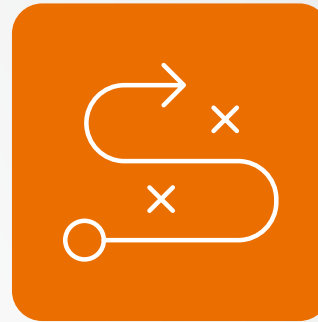
Supporting your
geospatial strategy

\Orchestrating a brighter world

Areas of Expertise

Our team of GIS and information technology professionals provide a wide range of technical services.

Services can be delivered individually or as part of an ongoing managed service to support your organisation's geospatial strategy.



Strategy &
System Design



GIS
Administration



Cloud
Migration



Project
Delivery



Software Integration
& Customisation



Implementation
Review



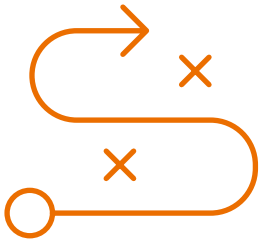
Spatial Data



Data Analysis
& Modelling



Training



Strategy & System Design

Define a best-fit GIS and spatial data strategy

Applying our GIS domain expertise and industry knowledge from multiple sectors, we design a geospatial strategy that is right for your organisation.

NEC undertakes a geospatial capability assessment, data audit, market research, and a gap analysis using recognised best practice. An in-depth report detailing options for improvement and a tactical roadmap will be delivered with recommendations on the next steps to meet your organisation's strategic goals.

NEC





Project Delivery

Ensuring intended outcomes are met

We know it is important that your GIS investment is delivered on time, on budget, and within the agreed-upon scope.

A PRINCE2 Project Manager is assigned from project initiation through to server and software installation, data preparation, system testing, and go-live preparation. Post go-live activities include monitoring, fault resolution, and a final debrief. A detailed plan will be supplied and updated throughout to ensure milestones are reached.

NEC





Spatial Data

Hosted, managed and maintained maps

NEC partners with data suppliers including Ordnance Survey® to provide a wide range of data services. Spatial data can be provided in popular GIS formats and as cloud hosted web services.

Maps are provided directly to your GIS or web mapping application and all map updates are applied by NEC as part of the service.

NEC



©Crown Copyright and database rights 2026 OS AC0000818340



©Crown Copyright and database rights 2026 OS AC0000818340

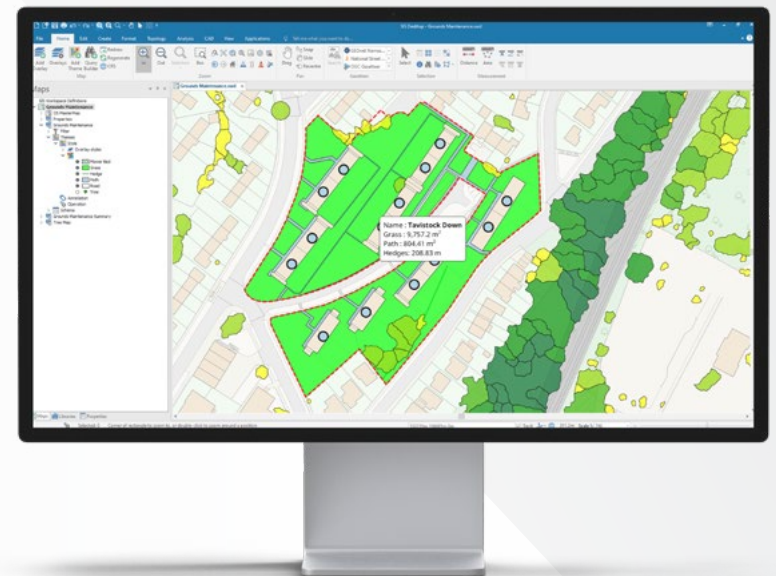


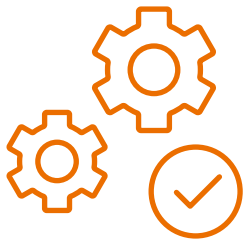
GIS Administration

Individual tasks or on-going managed service

We assist organisations with their GIS and web mapping. This includes undertaking administration tasks such as installation and configuration of service releases, database support and updates, data management, and managing templates and libraries.

Our GIS technicians can also carry out user tasks such as creating, editing and styling spatial data, spatial analysis, and map and report production.





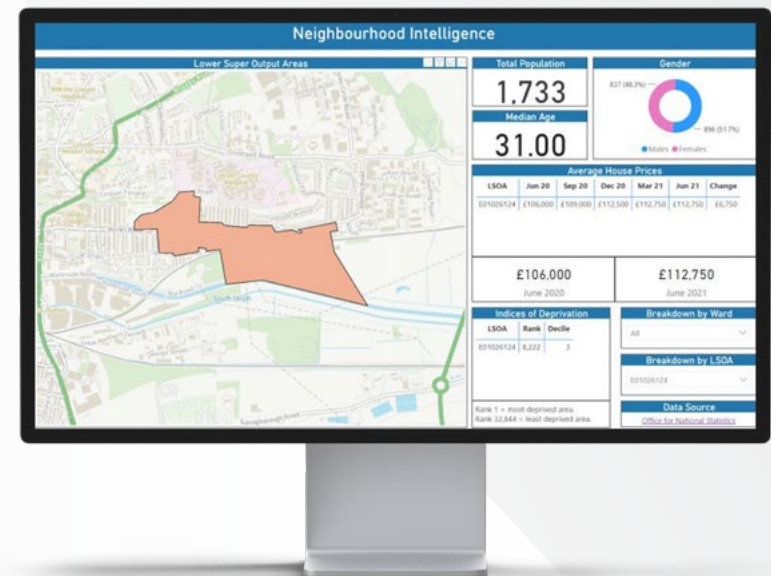
Software Integration & Customisation

Maximise your GIS and web mapping

NEC provide support for customisation projects and integration with a range of databases, software providers and applications designed for specific business sectors.

This includes planning, building control, housing management, gazetteers, mobile data, and command and control.

NEC





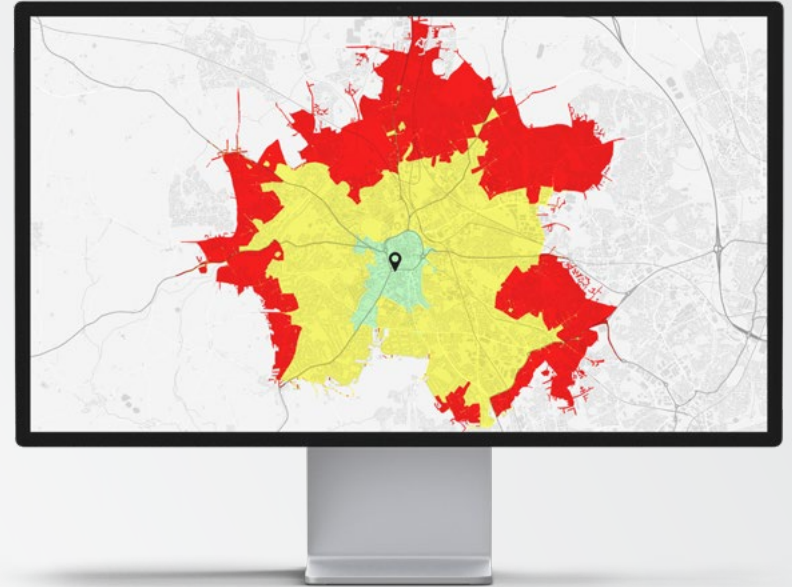
Data Analysis & Modelling

Independent analysis and methodology testing

We use our industry knowledge and experience to deliver a wide range of specialist data analysis and modelling projects. Examples include strategic resource assessment, risk modelling, land ownership and site location.

Our team of specialists can provide end-to-end project delivery or a quality assurance service to complement in-house modelling.

NEC



©Crown Copyright and database rights 2026 OS AC0000818340

	9	10	11	12	13	14	15	17	20	25	26	27	28	29	30
5.8%	4.5%	3.2%	2.4%	4.5%	1.2%	1.7%	1.1%	18.3%	6.3%	2.2%	2.4%	1.7%	2.1%	1.9%	
5.5%	5.0%	3.0%	1.7%	3.5%	1.2%	1.6%	1.5%	21.2%	6.0%	2.1%	2.2%	1.3%	2.1%	1.9%	
5.5%	4.2%	2.8%	1.8%	3.3%	2.0%	1.5%	1.4%	19.7%	5.8%	2.0%	3.1%	1.9%	1.9%	2.2%	
6.0%	4.7%	1.7%	2.0%	3.6%	1.7%	1.3%	0.9%	19.9%	6.7%	2.5%	3.2%	2.2%	3.1%	1.9%	
7.1%	5.8%	2.3%	2.2%	4.2%	1.9%	2.1%	1.0%	18.1%	5.4%	2.8%	2.8%	2.2%	2.9%	2.2%	
7.1%	5.6%	3.1%	2.3%	4.2%	1.3%	1.4%	1.1%	17.2%	6.6%	2.0%	2.4%	1.2%	2.6%	2.3%	
5.7%	5.9%	3.1%	1.7%	3.5%	1.5%	1.2%	0.9%	18.1%	5.8%	2.2%	2.5%	1.5%	3.0%	2.7%	
5.7%	5.5%	3.2%	1.6%	2.9%	1.1%	1.2%	0.9%	17.2%	7.5%	2.3%	3.0%	1.8%	2.7%	2.5%	
4.9%	4.5%	3.1%	1.8%	3.8%	1.3%	1.6%	1.7%	15.2%	7.8%	2.9%	2.9%	2.0%	2.5%	2.4%	
6.1%	5.1%	3.5%	2.5%	3.7%	1.3%	1.6%	1.6%	14.0%	7.1%	2.5%	3.0%	1.8%	2.2%	2.0%	
5.4%	5.7%	3.1%	1.8%	3.4%	1.4%	2.0%	1.2%	14.2%	7.9%	2.9%	3.5%	2.2%	3.0%	2.2%	
5.7%	5.0%	3.1%	2.2%	3.6%	1.7%	1.9%	1.7%	13.8%	7.2%	2.3%	3.5%	2.3%	3.6%	1.8%	
5.6%	5.6%	2.7%	2.4%	3.0%	1.8%	2.2%	1.6%	12.8%	6.9%	2.4%	3.2%	1.6%	3.4%	2.5%	
6.1%	5.9%	2.8%	2.4%	3.8%	1.6%	2.1%	1.4%	12.3%	6.2%	2.7%	3.3%	1.5%	3.0%	2.3%	
5.4%	5.8%	3.1%	2.3%	3.9%	1.9%	2.5%	1.3%	11.1%	6.8%	2.7%	3.5%	1.9%	2.6%	2.6%	
5.6%	5.8%	3.6%	2.6%	3.6%	1.8%	2.1%	1.4%	11.6%	6.3%	2.4%	3.5%	2.2%	2.5%	2.6%	
6.0%	6.4%	3.6%	2.7%	4.2%	1.9%	2.1%	1.5%	11.3%	6.4%	2.3%	3.2%	1.9%	2.2%	2.5%	
5.3%	5.5%	3.7%	2.7%	4.5%	1.9%	2.6%	1.5%	12.0%	7.1%	3.0%	3.2%	2.1%	2.4%	2.4%	
5.3%	5.7%	3.0%	2.1%	4.8%	1.7%	2.4%	1.3%	12.9%	6.5%	2.9%	3.4%	2.1%	2.3%	2.4%	
5.7%	5.9%	2.6%	2.1%	4.4%	1.7%	2.3%	1.6%	13.6%	6.7%	2.9%	3.0%	2.3%	2.7%	2.4%	
5.8%	5.5%	2.6%	2.2%	3.1%	1.4%	2.0%	1.4%	15.2%	7.4%	2.4%	2.8%	1.8%	2.1%	2.6%	
5.2%	5.0%	2.7%	2.4%	3.3%	1.2%	2.1%	1.3%	14.7%	6.9%	2.5%	3.0%	1.6%	2.4%	2.3%	
5.2%	5.1%	3.3%	2.2%	4.1%	1.5%	2.6%	1.1%	15.7%	6.0%	2.7%	3.0%	1.8%	3.0%	2.2%	
5.1%	4.5%	3.0%	2.5%	4.5%	1.4%	2.1%	0.8%	17.4%	5.7%	2.7%	3.0%	2.1%	2.4%	2.0%	



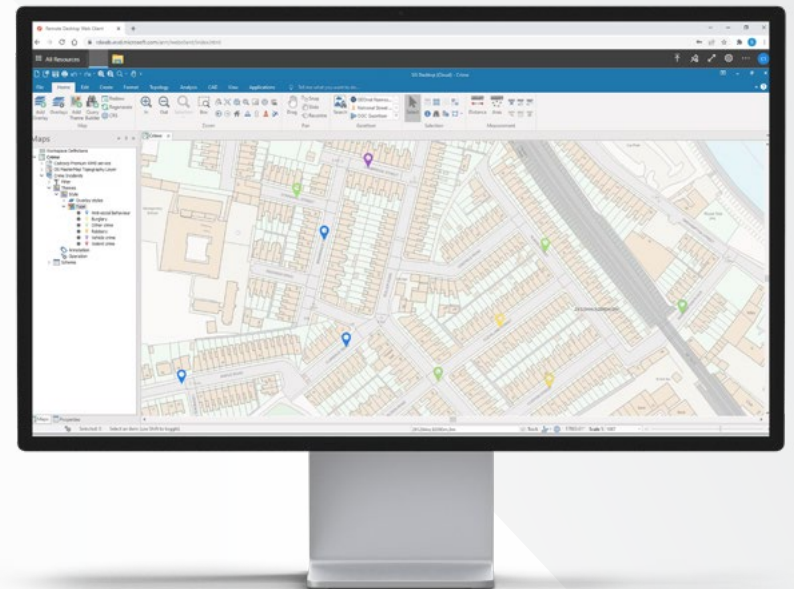
Cloud Migration

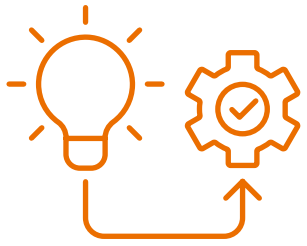
A cloud strategy specific to your organisation

We work with organisations to guide them through the cloud migration process.

NEC technology specialists will review your organisation's current GIS software, base mapping, business data, security, and integrations with other systems. We can then offer advice and best practice on a cloud migration model that meets your organisation's strategic requirements.

NEC



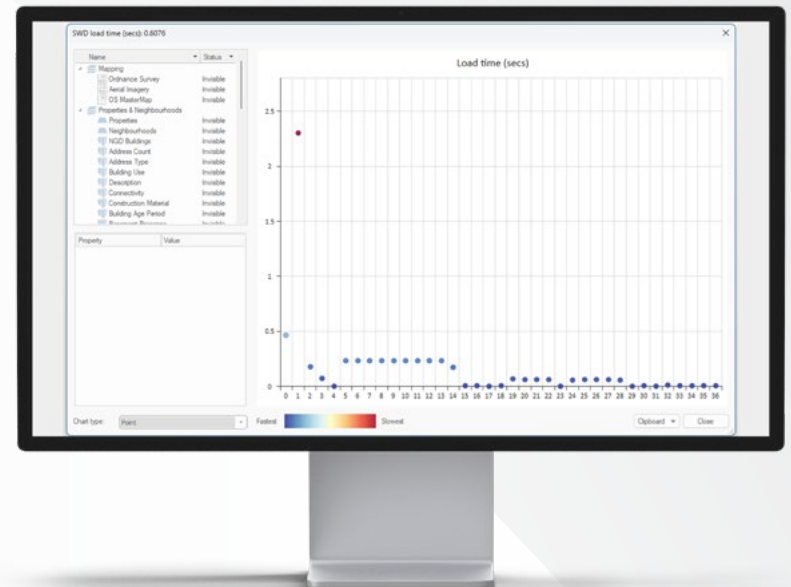


Implementation Review

A health-check for your onsite GIS

After the initial implementation of an onsite GIS, your organisation's IT infrastructure may have changed considerably. This can affect the efficiency, speed and responsiveness of the GIS.

An NEC engineer will examine your organisation's IT infrastructure and produce a comprehensive report that highlights potential issues, areas for improvements, and recommendations on how to optimally configure both the GIS and IT environment.





Training

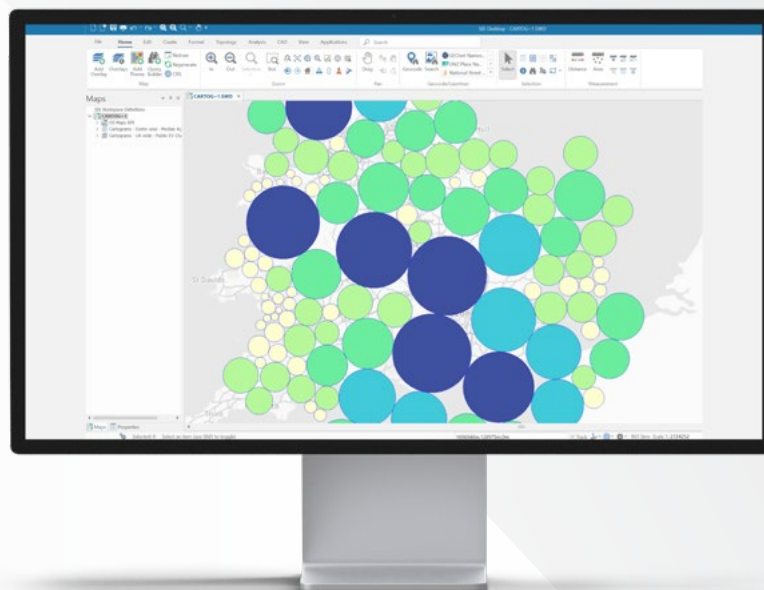
GIS courses that maximise knowledge retention

We offer a full range of GIS training courses to enable you to develop your knowledge and confidence.

With our instructor-led courses, you can participate and collaborate online and talk to the trainer and other students just like in the classroom. You can choose from scheduled online course dates or arrange a course for your organisation.

Further information can be found [here](#) >

NEC



About NEC Software Solutions

We build software and services that deliver better outcomes, keeping people safer, healthier and better connected.

In partnership with our customers in the government, health, housing and public safety sectors, we improve the services that matter most.

enquiries@necsws.com



\Orchestrating a brighter world

NEC